

N° 42

2023

SAUTER FACTS

The magazine for SAUTER customers

News from the SAUTER Group
Introducing latest acquisition T4 (UK)

The new Customer Portal
Our cloud-based service expertise

Three references
SAUTER projects in Germany, France
and Switzerland

NEWS

04

Introducing T4 Group
Addition to the SAUTER Group
in the UK

06

Introducing Klaus Trescher
Change of leadership in the
Technology Division

08

Welkom! Benvenuto! Welcome!
Look at the new offices of our
subsidiaries

INNOVATION

12

Customer Portal
New addition to the
SAUTER Cloud solutions

14

SAUTER Vision Center 8.0
Achieving sustainability targets
with digital support

HIGHLIGHTS

18

DFB Campus, Frankfurt
SAUTER Germany

20

District heating in the
commune of Bischwiller
SAUTER France

22

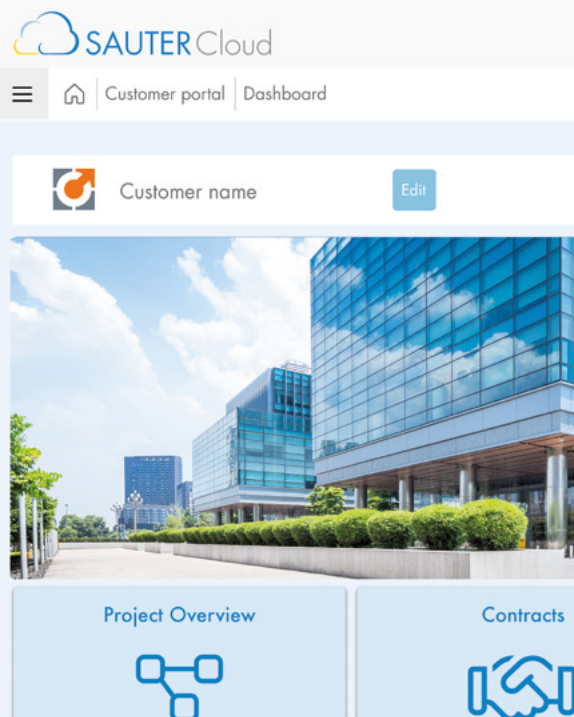
Roche Bau 2, Basel
SAUTER Switzerland

ADDRESSES

24-25

IMPRINT

25





Dear Customers and Business Partners, Dear Readers,

The end of the year is in sight, so now is a good time to present to you the fruits of our labour. We have continued to grow, to expand our portfolio in the digital services segment, and to realise interesting reference projects. We would like to share all the details with you in this issue of SAUTER FACTS.

It is our pleasure to introduce to you our latest addition to the SAUTER Group on pages 4-5. With our acquisition of the T4 Group, we have further expanded our presence in the UK and strengthened our core business.

On the topic of core business: products and systems with communication functions provide the basis for smart buildings. Digital, cloud-supported service concepts enable the efficiency and the value of intelligent buildings to be further increased, and we offer customer-specific service packages based on our SAUTERCloud. With the new Customer Portal, we have taken another step towards digital efficiency. Find out how building managers can benefit from this new product on pages 12-13.

Successful digitalisation concepts for smart buildings require a holistic and customisable management system. With the SAUTER Vision Center (SVC) building intelligence hub, we offer a powerful central interface for all data – the optimised version 8 is now available.

Three selected references will show you how our products have contributed to the success of a wide range of building projects (p. 18-23).

In our reference projects we show how our customers' state-of-the-art, energy-efficient and functional rooms significantly increase the quality of living and working in their buildings. But what about our own company? In this issue we give you an exclusive look inside the new and remodelled offices of our branches in Italy, England and the Netherlands. Take a peek behind the scenes on pages 8-11.

I thank you for your interest in our customer magazine and wish you an inspiring read!

Yours, Werner Karlen, CEO

INTRODUCING T4 Group

SAUTER has acquired a majority stake in the T4 Group, consisting of T4 Mechanical & Electrical Ltd., React 4 Group Ltd. and Lidex Control Systems Ltd. The agreement will enable the SAUTER Group to strengthen their core business and further expand their presence in the UK.

The acquisition of the T4 Group leads to a further milestone in the growth strategy of SAUTER. The company, headquartered in Redhill, Surrey, in Southeast England, has a broad portfolio. T4 Mechanical & Electrical, founded by the current owners and directors, specialises in mechanical and electrical construction services. React 4 Group provides engineering solutions for fire protection and fire suppression in buildings. Lidex Control Systems, which is active in building automation solutions, completes the group. Jeff Prince, Gene Clout and Adam Ward continue to manage the businesses of the three subsidiaries.



T4 Group

Foundation:	2009 with T4 Mechanical & Electrical Ltd.
Location:	Redhill, Surrey
Employees:	50
Revenue 2022:	EUR 30 million

Specialisation:
Mechanical and Electrical Building Services, Specialist
Fire Protection and Building Management Systems



The acquisition of the T4 Group by SAUTER provides the foundation for our operating companies to continue with the expansion plans whilst benefitting from the synergies of being part of a worldwide group of companies. Since joining SAUTER in May, their Board of Directors and my fellow Managing Directors of the other subsidiaries have welcomed us warmly. We look forward to working with all SAUTER Group companies and exploring the shared opportunities.



Jeff Prince

Project: Glengall Road

A new building complex is being built on the site of a former factory and warehouse in the London Borough of Southwark. The scheme comprises 170 residential apartments alongside 3,700 m² of retail and commercial space. Part of the historic façade, including an industrial chimney, will be preserved to ensure the development is in keeping with the heritage of the local area.

T4 Mechanical & Electrical Ltd. was assigned to supply, install and commission complete turnkey mechanical systems. This includes a centralised energy centre with air source heat pump as well as building management systems, boosted cold water, heat recovery ventilation and thermal insulation. React 4 Group provides fire sprinklers, AOV systems and dry risers.

The project is being carried out by HG Construction, a long-standing customer of the T4 Group. Glengall Road will be T4's 6th project with HG Construction over the past five years.



INTRODUCING Klaus Trescher

On 2 May, Klaus Trescher took over the role of Chief Technology Officer of the SAUTER Group. What experience does he bring to this role, and what does he think is needed to move the technology division forward?

Technology is the origin of SAUTER's business activity. And the technology division is still the largest specialist area at the Group's headquarters. Therefore, the Chief Technology Officer (CTO) is one of the main decision-makers, who, based on the company strategy, implements methods and deploys staff and resources effectively and with a vision for the future.

«In addition to this, a CTO should be a driving force, developing strategies together with his teams for advancing the right projects and innovations; for example, in order to keep improving development processes,» adds Klaus Trescher, who took over this challenging role at SAUTER this spring.

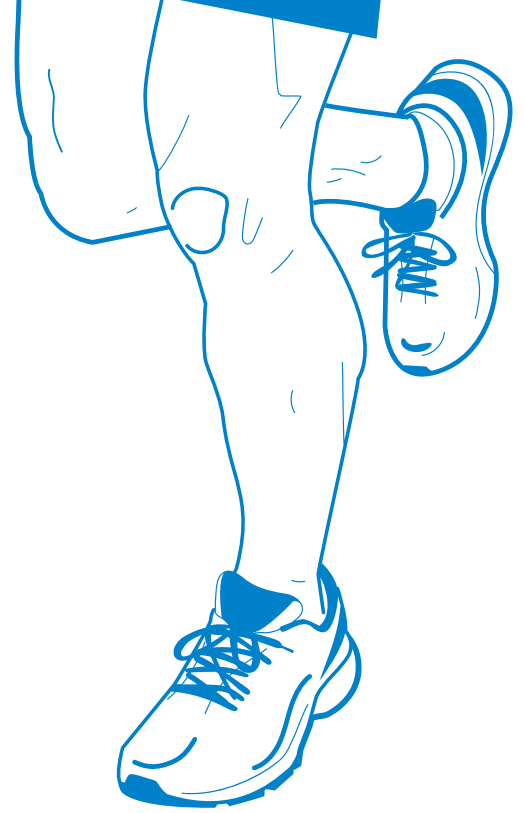
Fresh air for new ideas

An innovative spirit, a systematic working method, and years of experience in development and project management are the hallmarks of the new CTO. «Of course, focusing on results is a part of the job, but I believe I have often achieved my goals by means of a creative approach and through perseverance.»

This perseverance is reflected in the Bavarian native's favourite pastime: running. «While I'm jogging up to 25 kilometres three or four times a week, I process what's been happening that day and find inspiration in new ideas. I'm convinced that I benefit not just physically from sport, but also build up my endurance for my working life.»

The graduate electrical engineer has steered organisations through crises and change processes — with success. His management experience includes international building technology projects that have given him an understanding of global markets. He spent 20 plus years at Siemens in a management position, and his last role was Head of Tech Building Technology at REHAU.





Building on innovations

During his first months at SAUTER, the most important topics were the prioritisation of projects regarding specified deadlines and costs, as well as collaborations with subsidiaries. Evaluations were carried out on whether the structure of the division would enable it to meet the market's requirements for SAUTER's technical solutions. Klaus Trescher is focused on enhancing the reputation of the technology division alongside his own, for it to be seen as a partner with the highest performance standards. «For me, high performance in this context means setting and delivering transparent, clear targets and KPIs, and measuring the results. We give our best and, with a good team culture and our enthusiasm for the work we do, together we will achieve what the company needs,» says Trescher.

He is also excited about medium- and long-term projects. For the new CTO, innovation and digitalisation are of fundamental importance to the continued success of the SAUTER Group, and he envisages a renewed, sustainable culture of innovation.

Reviewing his time so far in the new job at SAUTER, Trescher emphasises the importance of working together in the developer teams and is enthusiastic about collaborating with his colleagues on the executive board. The conditions are ideal for the shared journey ahead, for products promoting the energy efficiency of buildings, and ultimately for the success of the company.



SNEAK PEEK INTO NEW Offices

The new, or remodelled, offices of our subsidiaries in the Netherlands, England and Italy are not only an expression of their activities, but also a clear commitment to their employees and customers. Let us take a look inside!

DIEMEN NEAR AMSTERDAM

"Both the working world and the way offices are designed today have changed. In our new office premises we rely on flexible utilisation concepts that enable our colleagues to adapt the workplace to their individual needs. Here they find desktop workstations, quiet retreats for concentrated work or phone calls as well as niches with comfortable furniture for informal exchanges."

Eric Kortz,
Managing Director SAUTER Nederland





BASINGSTOKE

"Needless to say, the majority of our staff are constantly on the road or with customers. With the redecoration of our headquarters, we wanted to create an inspiring place that facilitates exchange and boosts teamwork – which was all the more important after the pandemic! Whether they want to work on a joint project or hold a meeting, our offices offer the ideal environment for Team Blue!"

Andrew McKenzie,
SAUTER UK Chief Financial Officer



MILAN

"With the completely new office that we moved into in 2023, we are meeting several needs. On the one hand, the premises meet the latest standards and are thus representative of modern, energy-efficient and functional smart buildings. On the other hand, we know how important it is to be easily accessible. That is why we placed special emphasis on the location and the connection to important transport routes during the selection process."

Alberto Isola,
Managing Director SAUTER Italia



CONSOLIDATED BUILDING AND SERVICE OVERVIEWS IN THE Customer Portal

Everything is smart. In the current era of digitalisation, smart solutions are everywhere, but what specific benefits do they offer for the building management sector? The answer: transformation of traditional on-site services into cloud-supported and digital service expertise.

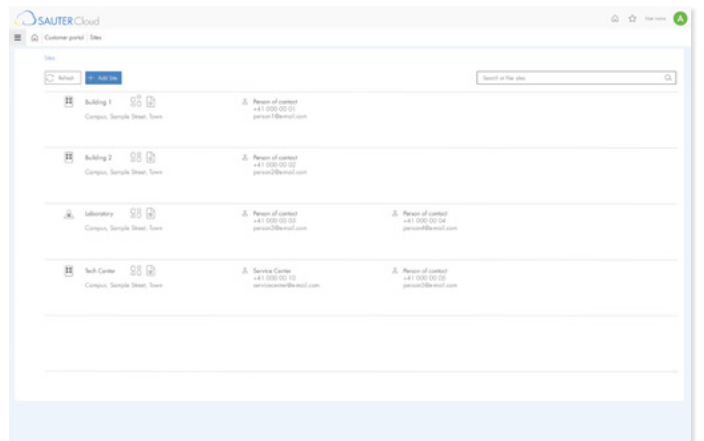
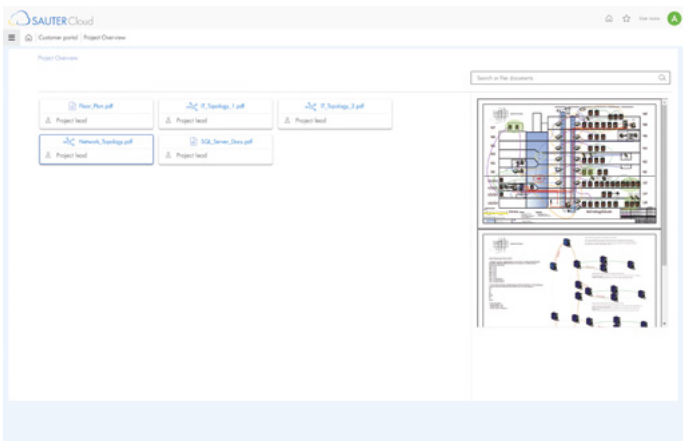
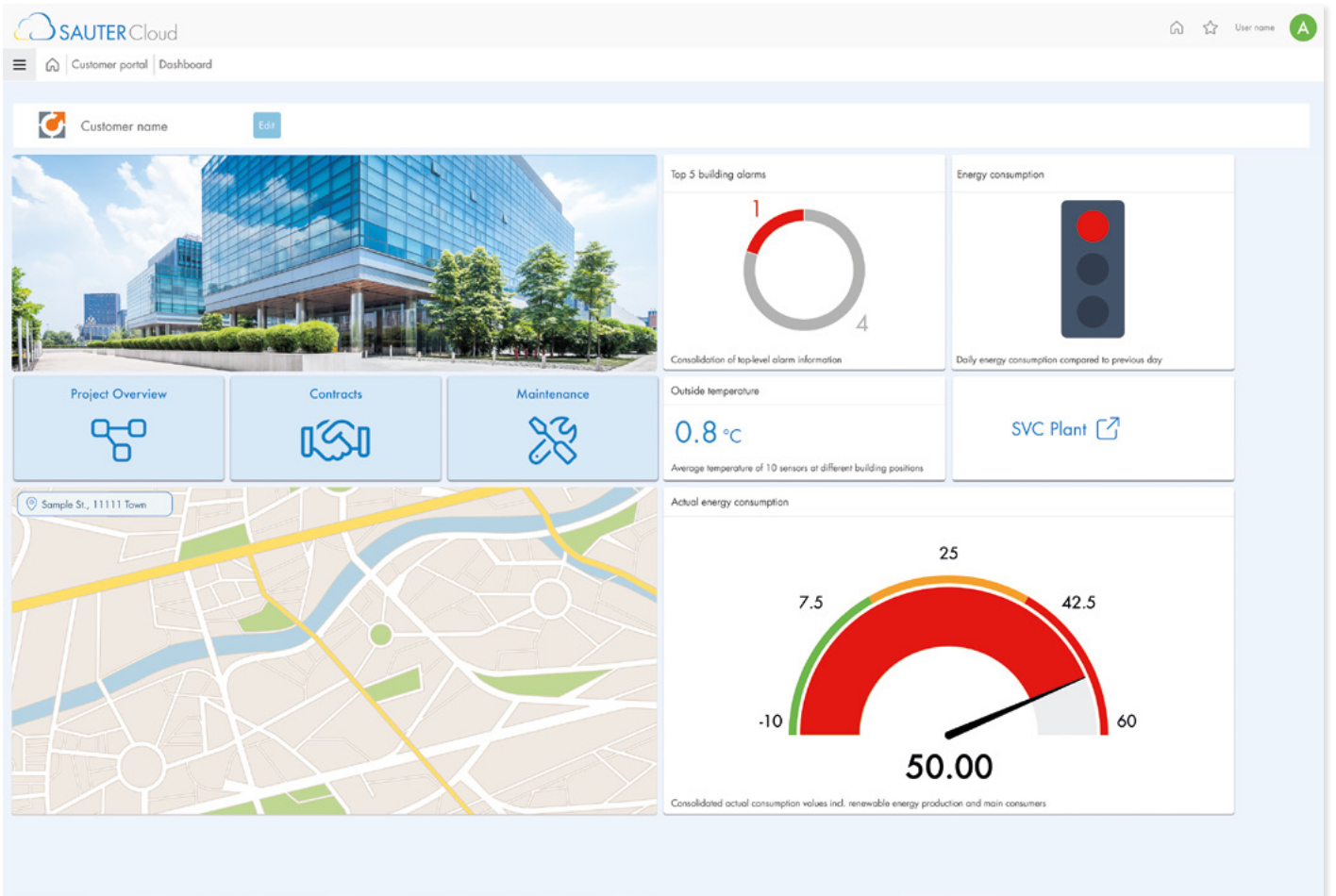
Connectivity coupled with digital services make a smart building even smarter. Building management processes are simplified thanks to the continuous, location-independent availability of all the building data required for sustainable operation, early automatic warnings in the event of deviations from normal operation, as well as intelligent remote access options. The positive effects range from increased room comfort to better risk management, optimised system availability, and an all-round increase in efficiency. Therefore, all parties involved benefit from digital service concepts.

Monitoring via the SAUTER Cloud

SAUTER's Customer Portal presents a comprehensive overview of the performance of technical systems (including lighting and air quality) and the energy costs. Building and Asset Managers receive consolidated information about their properties. It also makes the management of plant documentation and service contracts clearer and significantly easier. Thus, the Customer Portal improves the risk management and provides transparency.

With the digital service concepts and cloud solutions from SAUTER, we help you reduce your costs, add to the attractiveness of your building for its users, and increase the value of your property.

The Customer Portal and its services are part of the customer-specific service packages that the SAUTER sales organisations provide to customers with different types of properties, including individual buildings, dispersed premises, large building complexes and industrial areas.



Everything in one solution: All information is centralised in one portal, regardless of whether it is a single building with its technical trades, campuses, distributed properties or branches. Here you will find all the required system documents, contracts and invoices.

ACHIEVING SUSTAINABILITY TARGETS WITH DIGITAL SUPPORT

SAUTER Vision Center

Sustainable growth, digital transparency and ESG reporting — the demands on building operators are high. SAUTER Vision Center is the building intelligence hub that makes responsible target achievement both efficient and reliable.

Operating ESG-compliantly means conserving resources. Digitalisation offers a range of opportunities for doing this. While smart building technology is the key to sustainable building management, the introduction of digital service concepts enables its potential to be exploited fully. Digitalised service processes for smart buildings can lower emissions, increase user comfort and reduce overall costs.

Digital service concepts for sustainable growth

Digital service concepts require high-quality measurement data and an efficient central data interface. For the on-site data to be utilised effectively, it must be bundled, prepared precisely, analysed and visualised — a job for a building intelligence hub such as SAUTER Vision Center.

Better digitalisation? More visualisation!

SAUTER Vision Center meets the demands of building operators for comprehensive building, energy and maintenance management. Thanks to its modular structure, the web-based management tool in the HTML5 standard enables the operation, analysis and visualisation of building functions with maximum flexibility, regardless of location or system.

With the major release of SVC version 8.0, SAUTER is launching even more efficient reporting options that meet regulatory requirements.

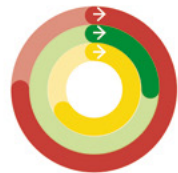
Focus on transparency and stakeholder communication

Reports are an essential tool for organisations to communicate their performance and progress on specific topics to a variety of stakeholders. ESG regulations now also require building operators to collect data and improve the sustainability of properties.

With SAUTER Vision Center (SVC) 8.0, a new report module has been integrated that enables the user to create customised reports.

Templates for various applications are available with the basic licence. The optional module can be used to create customer-specific reports for metrics such as building use, occupancy and operation, as well as ESG reports for sustainability and decarbonisation statuses, energy mix, consumption, and ultimately the associated costs.

Main building



7,583 kg
Daily calculated
365 days ago

139,225 kg
Monthly calculated
12 months ago

1,444,7... kg
Yearly calculated
2 years ago

Energy monitoring

- Overview of energy consumption & energy cost
- Summary of key figures in dashboards incl. labels, gauges,...
- Additional detailed information in dedicated chart view
- Alignment of locations, tenants and energy types
- Comparison of energy consumption and cost
- Display in KPIs such as traffic signal
- Sum of all energies, translation into CO₂ footprint
- Display of meter lists and definition of parameters for calculations

Building specifications

13-17 rodeodrive
18164 Deadwood

Surface 22.000 square meters
Floors 4
Parking 1

Building in 1963
Refurbished in 2007



103.00 kWh
Daily energy

639.00 kWh
Weekly energy

5,208.00 kWh
Monthly energy

Energy label



Main water consumption current month



0.00 m³
12 months ago

Updated 43 minutes ago

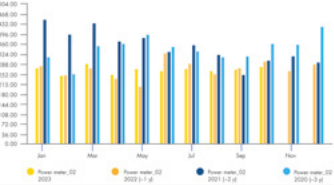


185.33 m³
Daily consumption

1,297.31 m³
Weekly consumption

5,560 m³
Monthly consumption

Power cost comparison



Monthly Report

Month: November 2023
Object: University, campus main building

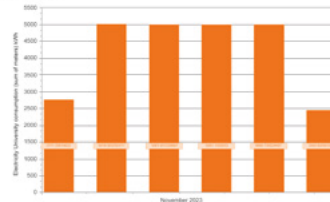


Electricity



5,208.00 kWh

Power - cost comparison



Monthly power consumption over the current year



November 2023
Building



Water



Operation

Manual operation control list

Identification	Device	Unit	Dimension	Unit of service	Manual
1001	SHControl	FLOOR_2	%		🔌
1002	SHControl	FLOOR_2	%		🔌
1011	SHControl	Operation complete floor 1	yes		🔌
1012	SHControl	FLOOR_2	%		🔌
1013	SHControl	FLOOR_2	%		🔌
1014	SHControl	FLOOR_2	%		🔌
1015	SHControl	Operation complete floor 1	%		🔌
1016	SHControl	FLOOR_2	yes		🔌
1017	SHControl	Operation complete floor 1	%		🔌
1018	SHControl	FLOOR_2	yes/no		🔌

Create customised reports with the report designer module in SAUTER Vision Center 8.0.

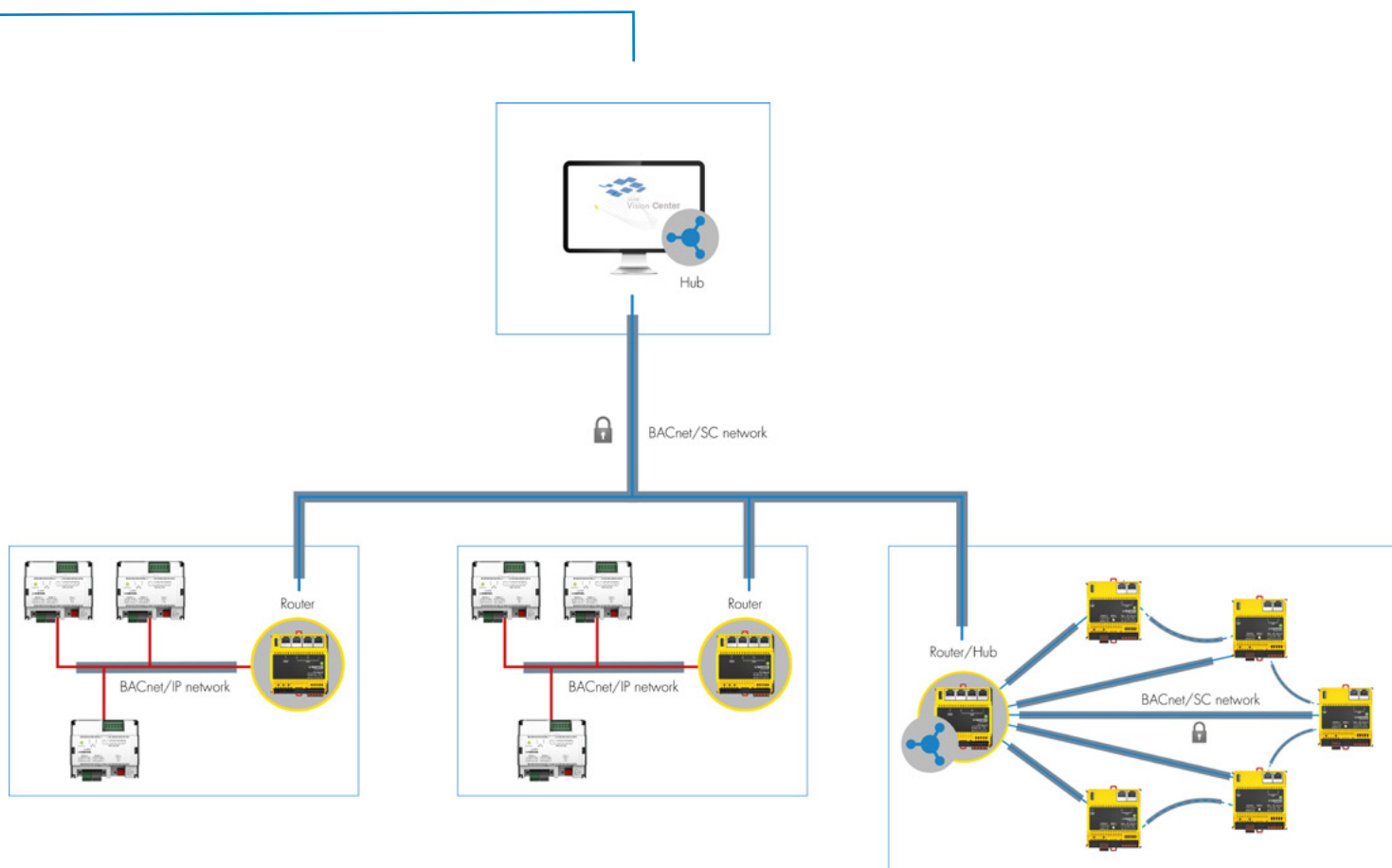
Added extra: BACnet/SC in the building management

With BACnet Secure Connect (BACnet/SC), the data exchange in the building automation meets the high cybersecurity requirements of the IT industry, thus plugging potential security gaps. Powerful BACnet/SC-compatible devices are a prerequisite for encrypted data transfer.

SVC 8.0 provides building operators with a system for holistic building and energy management that is already designed for the latest security standard. In the hub-and-spoke topology of the BACnet/SC network, SVC assumes the role of primary hub. It is therefore the central element of the network and configures and controls the communication of the encrypted BACnet objects.

ESG-compliant building management

Smart buildings and digital service concepts contribute to achieving sustainability targets while improving performance. In future, the combination of additional data such as building physics, building technology, energy and service prices, weather data and much more is expected to make building automation a sure-fire success for operators. In cooperation with leaders in intelligent building control, SAUTER is working intensively on this vision. More and more, increased efficiency and sustainable management will be inseparable.



A possible BACnet/SC scenario: A head office for building management with SAUTER Vision Center as BACnet/SC hub, several properties with BACnet/IP and a BACnet/SC extension in the network.



Find out more about our BACnet/SC solutions!

DFB Campus

BUILDING AUTOMATION ON THE NEW DFB CAMPUS

With the opening of its new campus, the "Deutscher Fussball-Bund" (DFB, German Football Association) is once again setting new standards as the biggest national sport federation in the world. SAUTER Germany also played its part in the success of the project, by implementing comprehensive building automation.

As the umbrella organisation of 27 German football associations and almost 24,500 football clubs, the DFB comprises a presidium, committees, boards and commissions that determine the elementary principles of the internationally successful sport. After more than nine years, the new DFB campus in Frankfurt was officially opened on 30 June 2022.

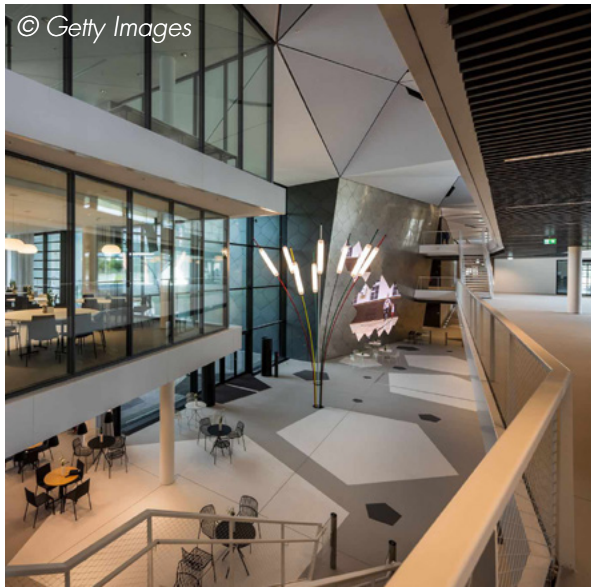
The DFB commissioned renowned Frankfurt project developer Groß & Partner for the planning and building work. For the complex task of building automation, the general contractor had already chosen SAUTER Germany in an early phase of the project. The decision was an easy one, due to having worked together and successfully delivered complex building projects in the past.

The solution

By the commissioning phase, SAUTER had already installed approx. 4,000 data points, distributed across 21 mechanical equipment rooms. The room automation comprises the room climate, sunshading (SMI) and lighting (DALI) functions. All the relevant functions are controlled using Modbus via a central switching point.

The installation of a 6-way regulating ball valve provides a flexible, effective regulating valve for heating and cooling the building. Weather-dependent control of the window blinds by the SAUTER ecos504/505 room automation station enables continuous optimisation of the room climate while maximising energy efficiency.





The new DFB campus in Frankfurt brings together previously separate departments and facilities on a total area of around 57,000 m².

The result

As its headquarters, the football federation's new campus brings together, over a total area of around 15 hectares, departments and facilities that were previously at separate locations. In less than two years, a four-storey building with around 57,000 m² of total floor space, an indoor football pitch, an event hall, a fitness area, conference and seminar rooms, offices for about 500 employees, and an athletes' residence were completed.

Each part of the multi-functional premises makes individual demands on the room automation. The solution package from SAUTER enables an ideal room climate while using energy resources efficiently.

District heating

IN THE COMMUNE OF BISCHWILLER (FR)

District heating from renewable energies is seen as a future-proof form of heating supply, provided that the grid distribution works efficiently and to optimal standards. The French commune of Bischwiller is setting a good example — with the help of intelligent solutions from SAUTER.

The commune of Bischwiller in Alsace has set high targets for itself. Within the scope of an ambitious environment and energy policy, it plans to set up municipal district heating with low CO₂ emissions and operated with over 96 per cent renewable energy. The goal is to save around 7,900 t of CO₂ every year. An ambitious undertaking that must fulfil not only the highest ecological but also economic criteria. The solution was developed based on a feasibility study: an innovative heating grid with a modular structure that generates sustainable energy in a central biomass heating plant, integrates existing and new infrastructure, and deploys a monitoring system to offer a range of opportunities to continuously optimise its performance.

Energy operator IDEX* was contracted to implement the project. With its many years of experience, the French energy company is aware of the great importance of reliable components and systems and is therefore collaborating with SAUTER France.

The solution

The core of the new heating grid is a biomass heating plant for the carbon-free provision of energy from wood, which has two boilers with outputs of 6.44 and 2.69 MW, as well as a 9-MW gas boiler and two buffer tanks, each with a volume of 50 m³. The existing heating system of the hospital centre, which has three combined boilers and two newly installed heat exchangers, is being integrated into the grid. The distribution network also has 124 substations that communicate via Modbus TCP and BACnet/IP.

The network valves in the substations (also known as switchyards) are controlled by the RDT600 controllers from SAUTER. IDEX is also using a solution from SAUTER to regulate, control and monitor the new biomass heating plant. The modulo 6 automation stations combine their excellent performance with a minimal space requirement. The modular structure enables flexible, bespoke solutions while optimising the overall costs.

All the data from the communicating components comes together in the SAUTER Vision Center. With its integrated energy management module, it provides all the options required to record, process, analyse and display energy values, consumption, KPIs and much more. Making it easy to identify and implement optimisation potential.

The result

Thanks to the continuous data recording and central processing enabled by the intelligent components and systems from SAUTER, moving forward the Bischwiller commune will be able to determine the energy demand for the municipal heating grid and adjust the required outputs accordingly. The demand-optimised energy production and distribution constitute an important step in the planned energy transition. The commune is also equipped for further developments, as the system is intrinsically forward-looking and future-capable due to the scalability and connectivity of the SAUTER modulo 6 automation stations and the SAUTER Vision Center building management.



The RDT600 from SAUTER France

The RDT600 is a configurable, universally deployable controller for heating, ventilation and air-conditioning applications.

Features:

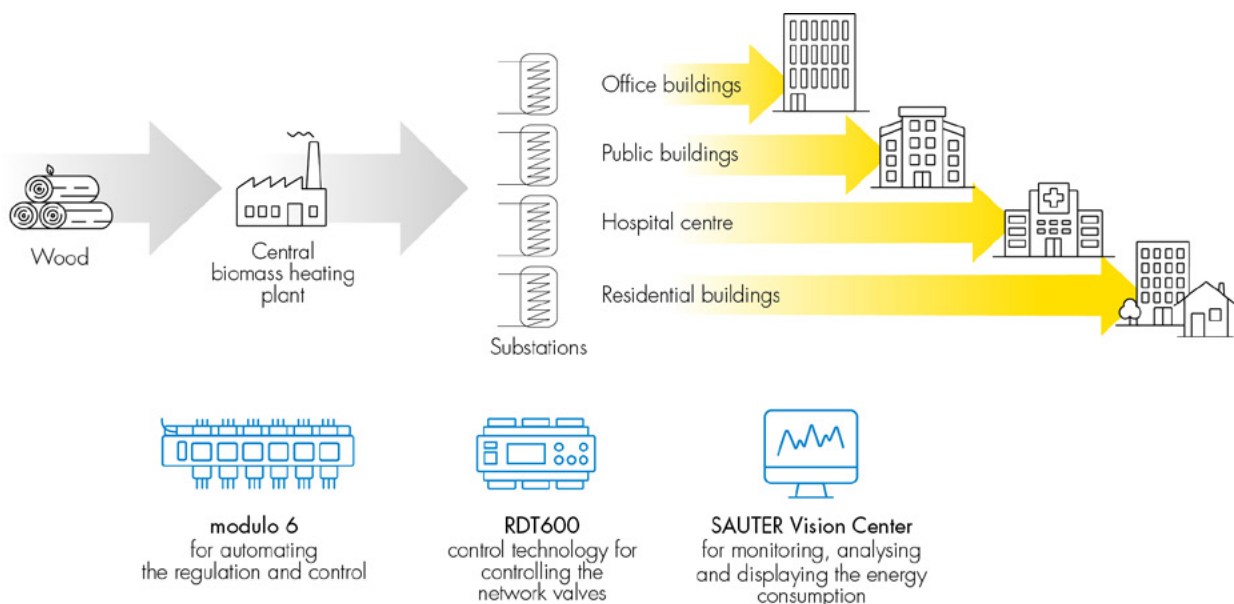
- Integrated web server enables fast, user-friendly parameterisation
- Online monitoring of the status of the inputs /outputs
- Many functions for sequences and system control
- Integrated time programme and calendar
- Programming saved on USB stick
- Communication via Modbus RTU
- Activation of 3-point actuators possible
- 3 access levels

*About IDEX

Founded in 1963 in France, the IDEX Group employs 5,700 people and develops, plans, finances, builds and operates local, decarbonised energy infrastructures for the supply of buildings, towns and industry with local, decarbonised heat and electricity.

www.idex.fr

Illustration: SAUTER products in the local district heating network of the commune of Bischwiller





The two iconic buildings on the Roche premises in the Wettstein district of Basel.

Roche Building 2

Several thousand SAUTER components were installed in Roche Building 2 in creating the flexible, future-proof building and room automation. Demand-based control of the air-conditioning and lighting systems and precise energy monitoring ensure sustainable building operation.

No sooner were the last spaces in Roche Building 1 occupied than the tower had to relinquish its title of tallest office building in Switzerland. The new title-holder, at 205 m tall, stands just a stone's throw away: Roche Building 2 was completed in spring 2022 and the two iconic constructions on the Rhine have been visible ever since from beyond the boundaries of the city and even the country. Building 2 is not only taller but also offers a total usable area of 80,000 m². With this second tower in Basel, Roche aims to create one of the most sustainable high-rises in Switzerland, if not the world.

The solution

SAUTER Switzerland, already responsible for the system and room automation in the building of the first tower, was involved in the Building 2 project from the very start. Notwithstanding the architectural similarities of the two towers, the building technology was revised and further developed. The building functions as a discrete ecosystem in which all the individual components must work together for the whole to operate successfully. SAUTER modulo 6 is the core of the building automation. The system provides the processing power necessary to reliably handle the big data volume of a 50-storey high-rise. The numerous devices within the large floor space are orchestrated by a total of 110 modulo 6 automation stations in Building 2.

In the room segments, SAUTER ecos504/505 room automation stations and operating devices provide a comfortable climate. The room temperature, lighting and sun shading are controlled autonomously and guarantee good lighting conditions, temperature and air quality in the workplace at all times. Manual interventions are possible – but not necessary.

SAUTER Vision Center (SVC) gives the customer a constant overview of the operating efficiency and the building performance. The Analytics and Energy Management (AEM) module takes care of the energy monitoring tasks. It incorporates all the necessary monitoring functions and, with its integrated analysis tools, enables the correct interpretation of the recorded data. In the transition periods of spring or autumn in particular, the energy consumption is optimised in order to meet emission targets.

For example, the SVC maintenance module allows service and FM work to be planned in advance, making the process more efficient. With the Scenario Manager, users can start, plan and change building automation procedures. To protect all the data that is collected and evaluated via SVC against unauthorised access, the platform works with encrypted communication (HTTPS) and a configurable user administration, including an audit trail of all interventions.

The result

From the valves in the heating and cooling systems, to the building and room automation systems, several thousand SAUTER components were installed in Roche Building 2. The user-friendly operating level provides detailed monitoring and recording of the operating data, which identifies opportunities to optimise energy consumption. Whilst integrating a range of technologies, Roche aims to achieve its ambitious sustainability goals for the premises. So far, the building is on the right path to sustainability success.



© 2022 F. Hoffmann-La Roche Ltd



THE SAUTER GROUP

SAUTER Deutschland

Sauter-Cumulus GmbH
Hans-Bunte-Str. 15
DE-79108 Freiburg i. Br.
Tel. +49 761 510 50
www.sauter-cumulus.com

Sauter FM GmbH

Werner-Haas-Str. 8-10
DE-86153 Augsburg
Tel. +49 821 906 73 0
www.sauter-fm.de

Pandomus GmbH

a SAUTER Group company
An der Wachsfabrik 1
DE-50996 Köln
Tel. +49 2236 8850-0
www.pandomus.de

SAUTER Schweiz

Sauter Building Control Schweiz AG
Im Surinam 55
CH-4058 Basel
Tel. +41 61 717 75 75
www.sauter-building-control.ch

SAUTER Österreich

Sauter Mess- u. Regeltechnik GmbH
Niedermoserstrasse 11
AT-1220 Wien
Tel. +43 1 250 230
www.sauter-controls.at

SAUTER France

Sauter Régulation S.A.S.
Site de la Fonderie
Bât. KMØ, 2ème Etage
30, rue François Spoerry
FR-68100 MULHOUSE Cedex
Tél. +33 3 89 59 32 66
www.sauter.fr

SAUTER Luxembourg

Sauter Régulation S.A.S.
7A, Rue de Turi
LU-3378 LIVANGE
Tél. +35 2 26 67 18 80
www.sauter.fr

SAUTER Nederland

Sauter Building Control Nederland B.V.
Stammerdijk 7A
NL-1112 AA Diemen
Tel. +31 20 5876 700
www.sauter-controls.nl

SAUTER U.K.

Sauter Automation Ltd.
Inova House
Lime Tree Way
Hampshire International Business Park
UK-Chineham Basingstoke RG24 8GG
Tel. +44 1256 37 44 00
www.sauterautomation.co.uk

Wren Environmental Limited

a SAUTER Group company
Unit 7, Mole Business Park
Randalls Road
UK-Leatherhead, KT22 7BA
Tel. +44 845 085 8899
www.wren-environmental.co.uk

Emtech Group Limited

a SAUTER Group company
Ellismuir Way
Tannochside Park
UK-Uddingston G71 5PW
Tel. +44 1698 808 030
info@emtecgroupp.co.uk

T4 Group Head Office

a SAUTER Group company
36 Ormside Way
UK-Redhill, Surrey RH1 2LW
Tel. +44 1737 770911
info@t4m-e.co.uk

SAUTER Ireland

Sirus
a SAUTER Group company
Unit 13, The Westway Centre
Ballymount Avenue
IE-D12 FW63 Dublin
Tel. +353 1 460 26 00
www.sirusinternational.com

SAUTER Italia

Sauter Italia S.p.A.
Piazza Indro Montanelli, 30
IT-20099 Sesto San Giovanni (MI)
Tel. +39 02 280 481
www.sauteritalia.it

Techne S.p.A.

a SAUTER Group company
Via Mazzini 34
IT-24021 Albino
Tel. +39 035 200 081
www.techne.mobi

SAUTER Portugal

Sauter Ibérica S.A.
Rua Henrique Callado, 8
Edifício Orange
Fracção A03
Leião-Porto Salvo
PT-2740-303 Oeiras
Tel. +351 21 441 18 27
www.sauteriberica.com

SAUTER España

Sauter Ibérica S.A.
Ctra. Hospitalet, 147-149
City Park, Edificio Londres
ES-08940 Cornellà de Llobregat
(Barcelona)
Tel. +34 93 432 95 00
www.sauteriberica.com

SAUTER Belgium

N.V. Sauter Controls S.A.
Zuiderlaan, 14 Box 8
BE-1731 Zellik
Tel. +32 2 460 04 16
www.sauter-controls.be

SAUTER Česká republika

Sauter Automation spol. s.r.o.
Bohnická 5/28
CZ-18100 Praha
Tel. +42 244 400 358
www.sauter.cz

SAUTER Magyarország

Sauter Automatikai Kft.
Fogarasi út 2-6.
HU-1148 Budapest
Tel. +36 1 470 1000
www.sauter.hu

SAUTER Polska

Sauter Automatyka Sp. z o.o.
ul. Rzymowskiego 31
PL-02-697 Warszawa
Tel. +48 22 853 02 92
www.sauter.pl

IMPRINT

SAUTER FACTS NR° 42

SAUTER Slovensko

Sauter Building Control Slovakia s.r.o.
Galvaniho 15/B
SK-82104 Bratislava
Tel. +421 2 6252 5544
www.sauter.sk

SAUTER Sverige

Sauter Automation AB
Krossgatan 22B
SE-16250 Vällingby
Tel. +46 8 620 35 00
www.sauter.se

SAUTER Srbija

Sauter Building Control Serbia d.o.o.
Prote Mateje 64
RS-11000 Beograd
Tel. +381 11 3 863 963
www.sauter.co.rs

SAUTER Middle East

Sauter Middle East FZC
P.O. Box 232 882
Oasis Center, Office #2, Floor 3
Sheikh Zayed Road,
Dubai UAE
Tel. +971 4 337 5180
www.sauter-controls.com

SAUTER China

Sauter (Beijing) Co. Ltd.
Suite A-602, Tower AB, Vantone Center,
A6 Chaoyangmenwai Street,
Chaoyang District
CN-100022 Beijing
Tel. +86 10 5879 4358
www.sauter.com.cn

SAUTER Korea

LS Sauter Co., Ltd.
127, LS-ro, Dongan-gu,
Anyang-si, Gyeonggi-do
Republic of Korea
Tel. +82-2-3442 5544
www.sauter.co.kr

SAUTER International

Sauter Building Control International GmbH
Hans-Bunte-Str. 15
DE-79108 Freiburg i. Br.
Tel. +49 761 510 54 05
www.sauter-controls.com

Publication date: December 2023

Concept Articles	SAUTER Head Office SAUTER Head Office TANNER AG
Translation Graphics	RWS Group Deutschland GmbH doyou GmbH
Cover image Printing	© 2022 F. Hoffmann-La Roche Ltd Koprint AG Paper LuxoSatin, FSC-certified



SAUTER FACTS is published in German, English, French and Nederlands.

Reprint permitted with acknowledgement of source.
Enquiries: media@ch.sauter-bc.com

SAUTER FACTS archive:
www.sauter-controls.com



SAUTER Head Office

Fr. Sauter AG
Im Surinam 55
CH-4058 Basel
Tel. +41 61 695 55 55
info@sauter-controls.com
www.sauter-controls.com

www.sauter-controls.com



Smart Sensor **viaSens**

The new dimension in room automation



 **SAUTER**
Creating Sustainable Environments.